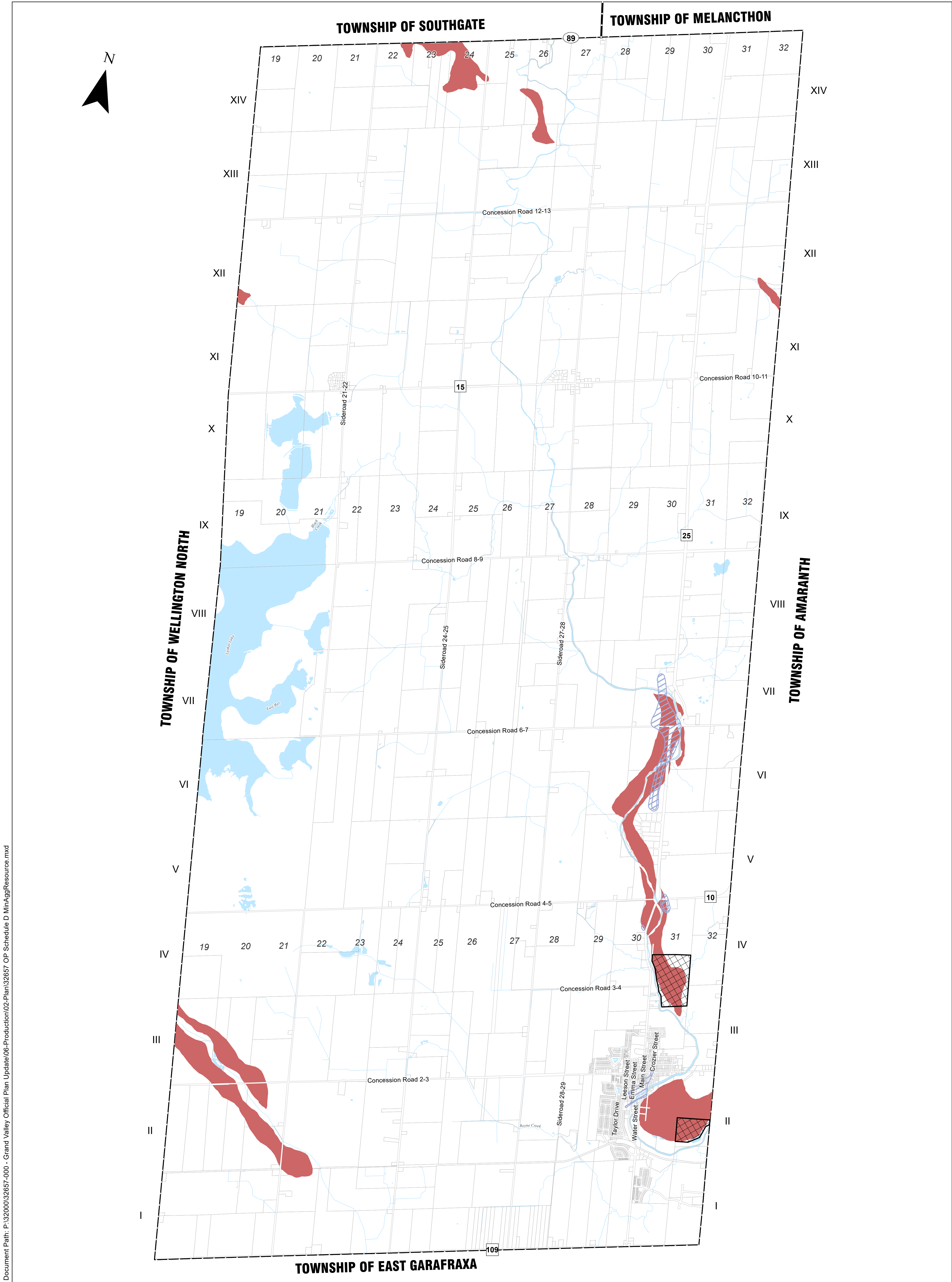


Document Path: P:\32000\32657-000 - Grand Valley Official Plan Update\06-Production\02-Plan\32657-OP-Schedule D MinAggResource.mxd



Official Plan

Town of Grand Valley

Schedule D Mineral Aggregate Resources

Legend

- 89 Provincial Highway
- 25 County Road
- Municipal Boundary
- Watercourse
- Waterbody

Mineral Aggregate Resources

- Mineral Aggregate Resource Operation
- Sand and Gravel Resource Area
- Bedrock Resource Area

Data Source: Source Data has been provided by the Ministry of Natural Resources, Grand River Conservation Authority, Dufferin County and Town of Grand Valley